

TCYC Spring Tune-up Regatta  
Saturday March 25, 2017  
Tiddly Cove Yacht Club  
Vancouver BC, Canada

## SAILING INSTRUCTIONS

### 1 RULES

- 1.1 The regatta will be governed by the rules as defined in [The Racing Rules of Sailing 2017-2020](#), subject to alteration by [PHRF-BC](#), the sailing instructions and notification from the race committee.
- 1.2 All boats must comply with [2016 PIYA SER Coastal Category](#).

### 2 NOTICES TO COMPETITORS

Notices to competitors will be posted on the official notice board(s) located at [www.tiddlycove.bc.ca](http://www.tiddlycove.bc.ca).

### 3 CHANGES TO SAILING INSTRUCTIONS

Any change to the sailing instructions will be posted before 0900 on the day it will take effect.

### 4 SIGNALS MADE ASHORE

- 4.1 No signals will be made ashore.

### 5 SCHEDULE OF RACES

- 5.1 Dates of racing:

*March 25, 2017*

- 5.2 The scheduled time of the first warning signal is 1100.

- 5.3 There will be no starts after 1530.

### 6 CLASSES and CLASS FLAGS

- 6.1 Boats will be divided in to two divisions based on their Performance Value (PV) calculated as:  $PV=(60-LOA)*5.4$ . If a boat has a PHRF rating faster than her PV then she is in Division 1, otherwise she is in Division 2.

- 6.2 Boats may request assignment to a different division by making a request in writing to the TCYC Fleet Captain prior to racing in the series.

- 6.3 Class flags will be:

<i>Division</i>	<i>Flag</i>
1	1
2	2

- 6.4 **No Flying Sails.** Boats rated for spinnaker but wish to race no flying sails shall make this clear to the race committee at check-in.

- 6.4.1 Any boat declaring no flying sails will be scored in the division appropriate to its usual PHRF rating.

- 6.4.2** The no flying sails allowance is 12 seconds unless there is a valid PHRF certificate indicating that a different allowance is appropriate.

## **7 RACING AREAS**

Races will be held in south east area of English Bay, generally west of the Kits Barge Buoy.

## **8 THE COURSES**

- 8.1** The diagrams and descriptions in Addendum A show the courses, the order in which marks are to be passed, and the side on which each mark is to be left.

- 8.2** No later than the warning signal for each race, the race committee signal boat will display the code flag, or letter placard corresponding to the course to be sailed. The race committee may announce the course on VHF channel 68, and verbally to boats within hailing distance.

- 8.3** Courses may be shortened as described in Addendum A. This changes rule 33.

## **9 MARKS**

- 9.1** Marks 1, 2, and 3 will be orange inflatable tetrahedrons, however at the discretion of the race committee may be changed to the Kits Barge Buoy, QC, a freighter, or any other such mark the race committee deems appropriate.

- 9.2** In the event the race committee uses a substitute mark they will fly code flag L, come within hail, and describe any change in course and marks verbally, and on VHF channel 68.

- 9.3** A red flag on the committee boat means leave all marks to port. A green flag on the committee boat means leave all marks to starboard.

- 9.4** The starting and finishing marks will be an orange flag on the committee boat and an orange flag on a floating staff.

## **10 AREAS THAT ARE OBSTRUCTIONS**

The following areas are designated as obstructions: A line extending from the northwest corner of the RCYC breakwater to the line beginning with the northwest corner of the RVYC Jericho breakwater, joining adjacent permanent red can buoys, and ending with the north end of the most westerly pier at Jericho Sailing Centre, shall be an obstruction. The Red marker buoys and the line both rank as obstructions. Boats sailing into the obstruction area shall be subject to protest and disqualification. DO NOT INDENT THE LINE.

## **11 THE START**

- 11.1** Races will be started by using rule 26 with the warning signal made 5 minutes before the starting signal.

- 11.2** There will separate starts for each division unless the race committee deems it appropriate to start both divisions together.

- 11.3** The starting line will be between a staff displaying an orange flag on the starting mark and a staff displaying an orange flag on the committee boat.

- 11.4** Boats whose warning signal has not been made shall avoid the starting area during the starting sequence for other divisions.

**11.5** A boat starting later than 5 minutes after her starting signal will be scored Did Not Start without a hearing. This changes rule A4.

## **12 THE FINISH**

**12.1** The finish line will be between a staff displaying an orange flag on the starting mark and a staff displaying an orange flag on the committee boat.

**12.2** Kiss of the Frog: If it becomes obvious that one boat will place last, with no opportunity of improving her position, the race committee may give her a last place finish without requiring her to cross the finish line.

**12.2.1** The race committee will sound three horns, raise the Kiss of the Frog flag, and attempt to hail the boat on VHF channel 68.

## **13 TIME LIMITS**

**13.1** Time limits for any division will be 1 1/2 hours from the start of the race for that division. If one or more boats in a division finish within the time limit, the time limit for that division will be extended 30 minutes.

**13.2** Boats failing to finish within time limit will be scored Did Not Finish without a hearing.

## **14 PROTESTS AND REQUESTS FOR REDRESS**

**14.1** Protest forms are available at [ISAF](#). Protests and requests for redress or reopening shall be delivered to the [Fleet Captain](#) within the time limit.

**14.2** For each class, the protest time limit is 3 hours after the last boat has finished the last race of the day or the race committee signals no more racing today, whichever is later.

**14.3** Notices of protests will be emailed to the involved parties and all parties will be informed of the time and place of the hearing when available.

## **15 SCORING**

**15.1** 1 race is required to be completed to constitute a regatta.

**15.2** (a) When 3 or fewer races have been completed, a boat's regatta score will be the total of her race scores.

(b) When 4 or more races have been completed, a boat's regatta score will be the total of her race scores excluding her worst score.

## **16 SAFETY REGULATIONS**

**16.1** Check-In: All boats must check in on VHF channel 68 or coming within hail of the race committee boat and giving boat name, sail number and division.

**16.2** A boat that retires from a race shall notify the race committee as soon as possible.

## **17 EQUIPMENT AND MEASUREMENT CHECKS**

A boat or equipment may be inspected at any time for compliance with the class rules and sailing instructions. On the water, a boat can be instructed by a race committee equipment inspector or measurer to proceed immediately to a designated area for inspection.

## **18 OFFICIAL BOATS**

Official boats will be marked by flying a large TCYC burgee.

**19 RADIO COMMUNICATION**

Except in an emergency, a boat shall neither make radio transmissions while racing nor receive radio communications not available to all boats. This restriction also applies to mobile telephones.

**20 PRIZES**

Prizes will be given as follows: To the top 3 boats in each division and attending the Wicklow Pub after racing. Racers are encouraged to retire to the Wicklow Pub after racing for results and special prizing.

**21 DISCLAIMER OF LIABILITY**

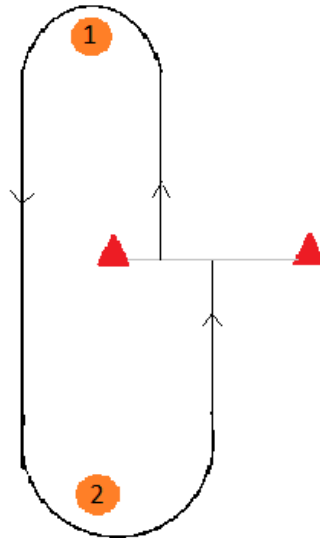
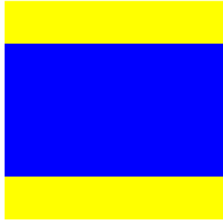
Competitors participate in the regatta entirely at their own risk. See RRoS rule 4, Decision to Race. The organizing authority will not accept any liability for material damage or personal injury or death sustained in conjunction with or prior to, during, or after the regatta.

**22 INSURANCE**

Each participating boat shall be insured with valid third-party liability insurance with a minimum cover of \$1,000,000 per incident or the equivalent.

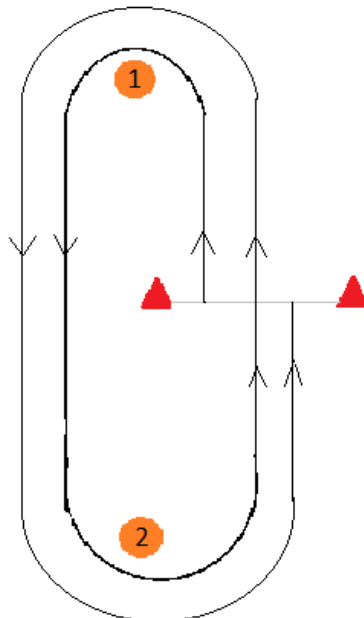
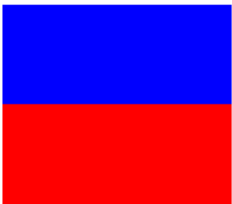
## ADDENDUM A

### Course Delta



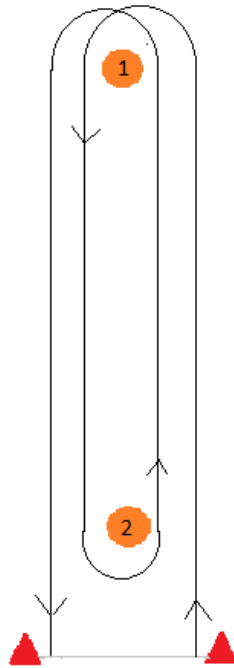
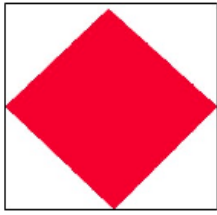
Start - 1 - 2 - Finish  
Marks to port unless indicated  
by green flag on committee  
boat.  
Do not cross start finish line  
on downwind leg.

### Course Echo



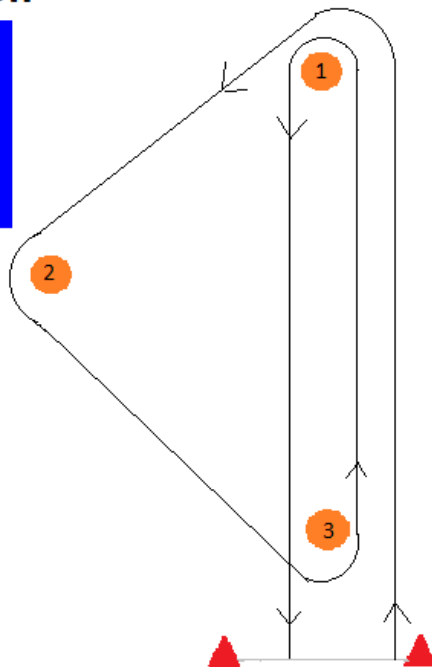
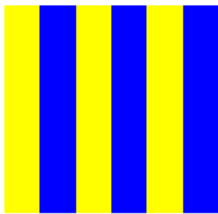
Start - 1 - 2 - 1 - 2 - Finish  
Marks to port unless indicated  
by green flag on committee  
boat.  
You must cross start finish line  
on upwind legs only. Do not  
cross on downwind legs.  
Course may be shortened at  
start finish line.

## Course Foxtrot



Start - 1 - 2 - 1 - Finish  
Marks to **port** unless indicated by **green**  
flag on committee boat  
Course may be shortened between  
mark 2 and committee boat.

## Course Golf



Start - 1 - 2 - 3 - 1 - Finish.  
Marks to port unless indicated by green  
flag on committee boat.  
Course may be shortened between  
mark 3 and committee boat.