



Skookum
YACHT SERVICES

present

TCYC Vancouver Shenzhen Challenge

consisting of the

English Bay Scramble

and

Sunday Short Courses

August 11 and 12, 2018

Tiddly Cove Yacht Club

Vancouver BC, Canada

SAILING INSTRUCTIONS

1. Rules and Race Requirements

- 1.1 The regatta will be governed by the rules as defined in [The Racing Rules of Sailing 2017-2020](#), the Sail Canada national prescriptions, the Notice of Race, the Rules of [PHRF-BC](#), and PHRF-NW, the Farr 30 International One Design Class Rules, the rules for ORC Club, the Martin 242 Class Rules as amended by Fleet One, the rules of the [VARC NOR](#), the Sailing Instructions and any subsequent amendments, and notification from the Race Committee.
- 1.2 All boats must comply with Transport Canada and Canadian Coast Guard regulations, and [Pacific International Yachting Association \(PIYA\) Safety Equipment Requirements \(SER\) Category Nearshore](#) or [ISAF Off Shore Regulations Category 4](#), as amended in the [VARC Notice of Race 1.5.4](#).

- 1.3** A yacht that impedes or obstructs commercial traffic may be subject to disqualification. A yacht that is the subject of five horns from commercial traffic may be subject to protest and disqualification.
- 1.4** Competitors who intend to fly sails that display numbers other than the yacht's official sail number shall report those numbers to the Race Committee (RC) by email at <mailto:fleetcaptaintcyc@gmail.com> at or before 1300 hours Friday, August 10, 2018. Competitors who fail to comply may be subject to protest by the Race Committee.

2. Notices to Competitors

Notices to competitors will be posted on the Tiddly Cove website at www.tiddlycove.bc.ca.

3. Changes to the Sailing Instructions

Any changes to the Sailing Instructions will be posted on the Tiddly Cove website (www.tiddlycove.bc.ca) no later than 2000 on the day prior to the race.

4. Signals Made Ashore

Signals will not be made ashore.

5. Schedule

- 5.1** The scheduled time of the warning signal for the first race each day is 1055 hours. There will be no starts after 1500 hours on Sunday 12 August 2018.
- 5.2** The Saturday race is the English Bay Scramble, a long course race. Sunday races will be short course racing.
- 5.3** The English Bay Scramble start on Saturday will include all competitors in all Divisions. Sunday starts will be by Division as signaled by Class Flags on Committee boat.

6. CLASS FLAGS

Boats will be assigned to divisions based on their handicap rating or classification as follows:

- Div. 1 (pennant 1): ORC GPH 610.0 or less
- Div. 2 (pennant 2): PHRF BC rating of 60-99
- Div. 3 (pennant 3): PHRF BC rating of 100-173
- Div. 7 (pennant 7): PHRF BC rating of 174-275
- M242 (M242 Pennant)

- 7. Safety Check-in** On each day of racing and prior to the warning signal, all boats must check in with the Race Committee on VHF Channel 68 or in person, stating the following: Boat Name, Sail Number, Division, after which confirmation

from the Race Committee must be obtained. Boats intending to race double-handed must indicate that intention during this communication.

8. Communications Skippers are encouraged to monitor VHF 68, from 1045 onward. In the case of a wayward mark or any alteration to the finish line, Race Committee will broadcast information on VHF 68 in a timely fashion.

9. Courses

9.1 Saturday Distance Race – the English Bay Scramble

9.1.1 The four marks of Saturday's English Bay Scramble course are P, G, K, and N (see "Marks" below), as well as the start/finish line and its two pins (see "Start/Finish" below). Each boat must round as many of the listed marks as possible, in any order, taking them to either port or to starboard, but boats **must also cross the start/finish line after either its first or its second mark rounding, leaving the committee boat to starboard, before continuing to subsequent mark roundings**. Boats can also cross the start/finish line in between any other mark roundings, always leaving the Committee boat to starboard, because a boat's most-recent crossing of the start/finish line will be recorded as a finish in the case of a shortened course (see "Shortened Course" below) or in the event that the competitor's boat failed to round all four marks.

9.1.2 In the event that a mark has drifted a considerable distance from its original posted position yachts are asked to round the GPS position stated in these instructions and report the wayward mark to Race Committee.

9.1.3 Boats must report the number of marks rounded and the order of roundings to the Race Committee via VHF channel 68 immediately upon finishing racing for the day.

9.1.4 Example Course As an example, the boat that finished first overall last year sailed G-P-SF-N-K-SF or Point Grey Bell Buoy, Passage Island, through Start/Finish, North Shore, Kits Barge Buoy and through Start/Finish. See Addendum A.

9.2 Sunday Short Courses

9.2.1 The diagrams and descriptions in Addendum B show the courses, the order in which marks are to be passed, and the side on which each mark is to be left.

9.2.2 No later than the warning signal for each race, the race committee signal boat will display the code flag, or letter placard corresponding to the course to be sailed. The race committee may announce the course on VHF channel 68, and verbally to boats within hailing distance.

9.2.3 Courses may be shortened as described in Addendum B. This changes rule 33.

- 10. AREAS THAT ARE OBSTRUCTIONS** The following areas are designated as obstructions: A line extending from the northwest corner of the RCYC breakwater to the line beginning with the northwest corner of the RVYC Jericho breakwater, joining adjacent permanent red can buoys, and ending with the north end of the most westerly pier at Jericho Sailing Centre, shall be an obstruction. The Red marker buoys and the line both rank as obstructions. Boats sailing into the obstruction area shall be subject to protest and disqualification. DO NOT INDENT THE LINE.

11. Marks

Mark N: North Shore, TCYC Orange Buoy Marker North of QB (49° 19.90' N, 123° 12.07' W)

Mark P: Passage Island (49° 20.78' N, 123° 18.40' W)

Mark G: Point Grey Bell Buoy. (49° 17.34' N , 123° 15.98' W)

Mark K: Kitsilano Barge Buoy (49° 16.97' N, 123° 09.86' W)

Marks 1, 2, and 3 for the Sunday short course races will be orange inflatable tetrahedrons or cylinders, however at the discretion of the race committee may be changed to the Kits Barge Buoy, QC, a freighter, or any other such mark the race committee deems appropriate.

- 11.1** In the event the race committee uses a substitute mark they will fly code flag L, come within hail, and describe any change in course and marks verbally, and on VHF channel 68.
- 11.2** A red flag on the committee boat means leave all marks to port. A green flag on the committee boat means leave all marks to starboard. Mark rounding direction in the English Bay Scramble distance race Saturday is at the competitor's discretion.
- 11.3.1 Saturday Distance Race – the English Bay Scramble** The starting and finishing marks will be an orange flag on the committee boat and orange flags on floating staff.
- 11.3.2 Sunday Short Courses** The starting marks will be an orange flag on the committee boat and an orange flag on a floating staff. The finishing marks will be an orange flag on the committee boat and a blue flag on a floating staff.

12. Start/Finish Line

- 12.1** The start/finish line will be in the middle of English Bay (at approximately 49°18.00' N, 123°12.07' W). Depending on conditions the start area may be moved eastward for the Sunday Short Course Races.
- 12.1.1 Saturday Distance Race – the English Bay Scramble** For the distance race on Saturday, the committee boat will be in the middle of the line and pins will be placed, one on either side of the Committee Boat. The start line will be between

an orange flag on the Committee Boat and ***either one of these pins.***

12.1.2 In the English Bay Scramble distance race either of the two “start-lines” can be used, but in every case a boat **must cross the start/finish line with the committee boat to starboard**. This applies both at the start **and during subsequent crossings including the final finish**. See Addendum A.

12.1.3 In the English Bay Scramble distance race a boat OCS at the start or otherwise failing to start properly after the start signal will have the option of restarting properly (still leaving a pin to port and the committee boat to starboard) or accepting a 10 percent time penalty.

12.1.4 The Race Committee may attempt to notify OCS boats by radio (VHF Channel 68). Failure to notify will not be grounds for a request for redress.

12.2 Sunday Short Courses

12.2.1 Sunday Short Courses The starting marks will be an orange flag on the committee boat and an orange flag on a floating staff. The finishing marks will be an orange flag on the committee boat and an blue flag on a floating staff.

12.2.2 In the short course races the start and finish lines shall not be crossed other than to start or to finish.

12.2.3 The Race Committee may attempt to notify OCS boats by radio (VHF Channel 68). Failure to notify will not be grounds for a request for redress.

13. Start

13.1 Saturday Distance Race – the English Bay Scramble

The race will be started according to Rule 26. There will be one start for all boats, the class flag for all boats being the VARC pennant. The scheduled 5-minute warning signal for all divisions is 1055 hours.

13.2 Sunday Short Courses

13.2.1 Races will be started by using rule 26 with the warning signal made 5 minutes before the starting signal.

13.2.2 There will separate starts for each division unless the race committee deems it appropriate to start two or more divisions together.

13.2.3 The starting line will be between a staff displaying an orange flag on the starting mark and a staff displaying an orange flag on the committee boat.

13.2.4 Boats whose warning signal has not been made shall avoid the starting area during the starting sequence for other divisions.

13.2.5 A boat starting later than 5 minutes after her starting signal will be scored Did Not Start without a hearing. This changes rule A4.

14. Finish

14.1 Saturday Distance Race – the English Bay Scramble A boat must cross the finish line leaving the Race Committee boat to starboard. Every finish will be confirmed by a sound. Once again, **upon finishing racing for the day, all boats must report to the race committee the number of marks rounded and the order in which this was done.**

14.2 Sunday Short Courses The finish line will be between a staff displaying an orange flag on the committee boat and a staff displaying a blue flag on the finishing mark.

15. Shortened Course - Saturday Distance Race – the English Bay Scramble A boat may shorten her own course by crossing the finish line after rounding fewer than all of the marks. Having recorded a finish this way, a boat may then continue racing in hopes of rounding additional marks. To record her improved finish, a boat must again cross the finish line after rounding the additional marks.

16. Time Limit

16.1 Saturday Distance Race – the English Bay Scramble No finishing times will be recorded after 1630 unless at least one boat in any division has finished before 1630, in which case the time limit is extended to 1700 for all divisions.

16.2 Sunday Short Course

16.2.1 Time limits for any division will be 1 1/2 hours from the start of the race for that division. If one or more boats in a division finish within the time limit, the time limit for that division will be extended 30 minutes.

16.2.2 Boats failing to finish within time limit will be scored Did Not Finish without a hearing.

17. Scoring

17.1 Saturday Distance Race – the English Bay Scramble

17.1.1 Within each division, boats that round more marks within the time limit will be placed ahead of those rounding fewer marks. Boats rounding the same number

of marks as one another will be placed according to time-on-time corrected time consistent with the ratings and classifications specified in the VARC 2018 General Notice of Race.

17.1.2 Yachts that wish to compete Double-Handed may do so as long as they report their intention during either registration or check-in. This race is included as a double-handed component of the TCYC Sailor of the Year Award.

17.1.3 For boats racing in the VARC Series, results for the English Bay Scramble will be scored separately as a Distance result

17.2 Sunday Short Courses

17.2.1 The low point scoring system of RRS Appendix A will apply.

17.2.2 Boats not properly registered will not be scored.

17.2.3 One race shall constitute a series.

17.2.4 DNF, OCS, RAF, DSQ, & DNS boats will be scored one more than the number of boats that come to the start area in that boat's division. See RRS A9. DNC boats will be scored one more than the number of boats that have registered in the regatta for that boat's division.

17.2.5 Scoring for yachts racing under an ORC Club or ORCi Certificate will be calculated by Time on Time using the Triple Number scoring coefficient for one of the following three wind speed ranges:

Low Range (9 knots or less)

Medium Range (between 8 and 14 knots)

High Range (equal to or greater than 14 knots)

17.2.6 (a) The Race Committee will announce the Declared Wind Range that it plans to use for each race on VHF 68:

L = Low Range

M = Medium Range

H = High Range

(b) The Race Committee may change the wind speed range if the actual recorded wind speed range is different than the Declared Wind Speed Range for more than 50% of the time that it takes the first-to-finish boat to transit the course. Any adjustments to the wind speed range will be based on the winds observed at the Committee Boat.

17.2.9 For VARC scoring purposes, results for the Sunday Short Course racing will be combined and scored as a VARC Regatta result.

17.3 TCYC Vancouver Shenzhen Challenge (overall weekend scoring)

17.3.1 TCYC Vancouver Shenzhen Challenge scoring is separate from VARC scoring.

17.3.2 One (1) race is required to be completed to constitute a regatta. Regatta scoring will be a total of the score achieved in the English Bay Scramble distance race plus the score of races sailed on the short course Sunday.

18. Protests and Penalties

18.1 Protests must be filed in accordance with ISAF rules.

18.2 Protests must be must be delivered in person to the Fleet Captain of TCYC or his designate within two hours of completion of the day's racing.

19. Safety and Responsibility

19.1 Any boat that sails between a tug and its tow will be disqualified from the race.

19.2 A boat that retires from the race shall notify the race committee as soon as possible. **19.3**

19.3 Racers are reminded to use their good seamanship when deciding when and where they are crossing existing shipping lanes.

19.4 Competitors participate in the race entirely at their own risk. See rule 4, Decision to Race. The organizing authority will not accept any liability for material damage or personal injury or death sustained in conjunction with or prior to, during, or after the race.

For further information contact:

Frank Rogers

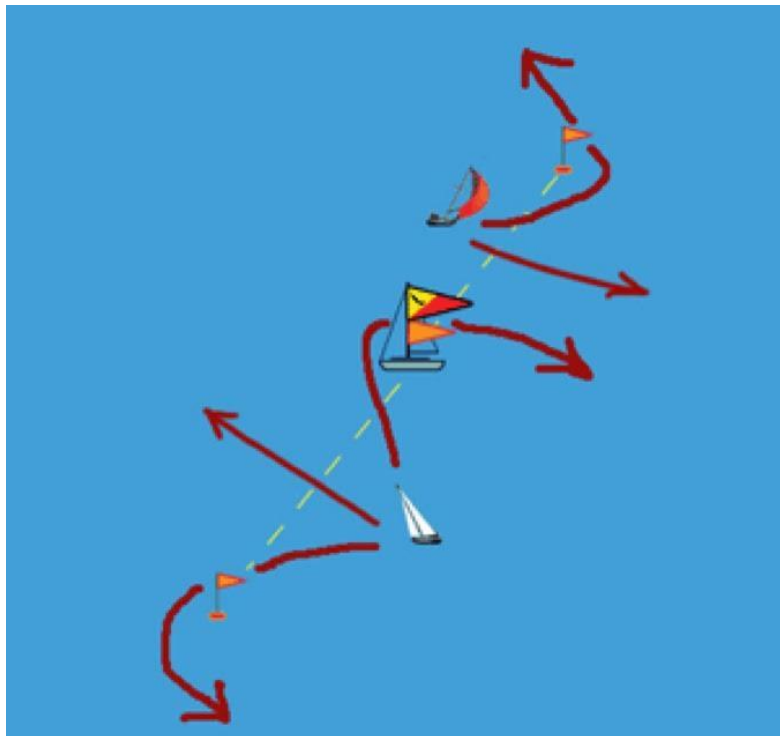
TCYC Fleet Captain

Email: rogers.frank@gmail.com

ADDENDUM A

English Bay Scramble Long Course

START and FINISH LINES

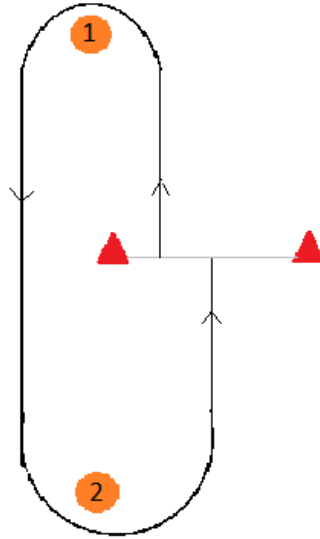
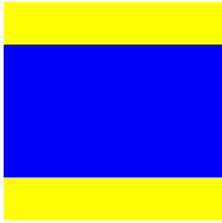


EXAMPLE COURSE



ADDENDUM B

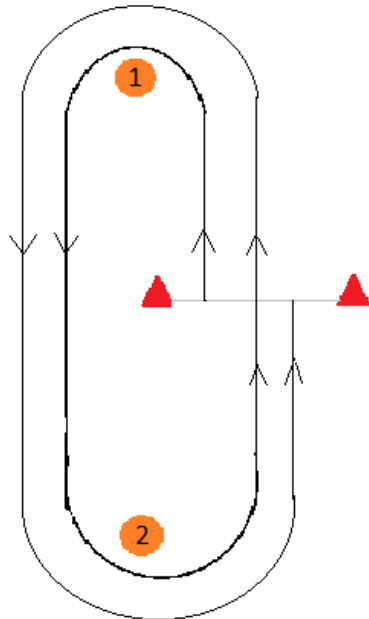
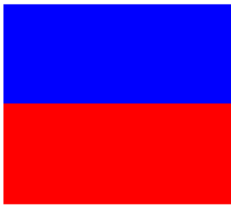
Course Delta



Start - 1 - 2 - Finish
Marks to port unless indicated
by green flag on committee
boat.

Do not cross start finish line
on downwind leg.

Course Echo

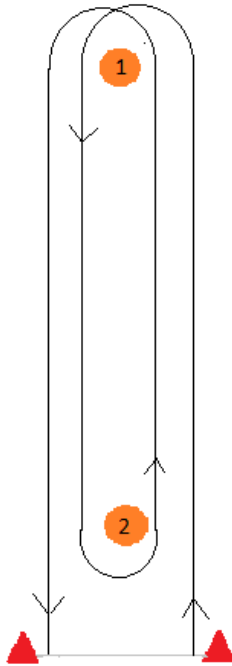
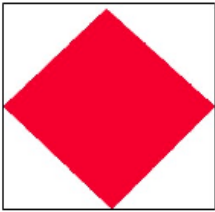


Start - 1 - 2 - 1 - 2 - Finish
Marks to port unless indicated
by green flag on committee
boat.

You must cross start finish line
on upwind legs only. Do not
cross on downwind legs.

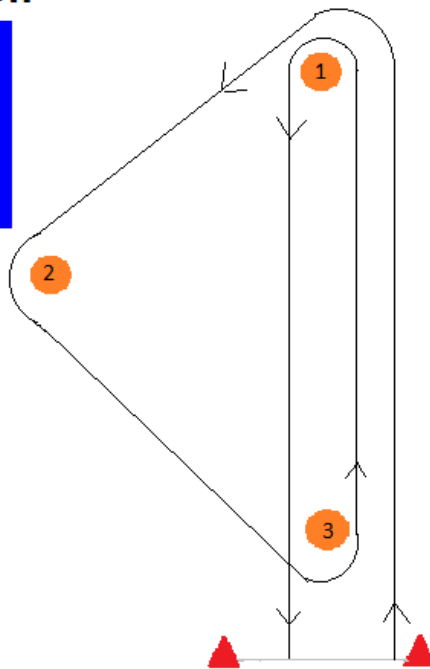
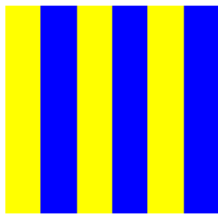
Course may be shortened at
start finish line.

Course Foxtrot



Start - 1 - 2 - 1 - Finish
Marks to **port** unless indicated by **green** flag on committee boat
Course may be shortened between mark 2 and committee boat.

Course Golf



Start - 1 - 2 - 3 - 1 - Finish.
Marks to port unless indicated by green flag on committee boat.
Course may be shortened between mark 3 and committee boat.

Our Sponsors



And Supported by



false creek yacht club