

TCYC New Years Day Race

Tuesday January 1, 2022

Tiddly Cove Yacht Club

Vancouver BC, Canada

SAILING INSTRUCTIONS

1 RULES

1.1 The regatta will be governed by the rules as defined in [The Racing Rules of Sailing 2021-2024](#), subject to alteration by [PHRF-BC](#), the sailing instructions and notification from the race committee.

1.2 All boats must comply with the Safety Requirements as set out in section 1.5 of the 2021 VARC Notice of Race found [here](#) as well as [BCSailing COVid19 Protocols](#)

2 NOTICES TO COMPETITORS

Notices to competitors will be posted on the official notice board(s) located at www.tiddlycove.bc.ca.

3 CHANGES TO SAILING INSTRUCTIONS

Any change to the sailing instructions will be posted before 0900 on the day it will take effect.

4 SIGNALS MADE ASHORE

4.1 No signals will be made ashore.

5 SCHEDULE OF RACES

5.1 Dates of racing: *January 1, 2022*

5.2 The scheduled time of the warning signal is 1100.

5.3 There will be no start after 1400.

6 CLASSES and CLASS FLAGS

6.1 Boats will be divided in to two divisions based on their Performance Value (PV) calculated as: $PV=(60-LOA)*5.4$. If a boat has a PHRF rating faster than her PV then she is in Division 1, otherwise she is in Division 2.

6.2 Yachts wishing to race in a division other than that assigned by based on their Performance Value should, prior to race day, submit a request in writing to the fleet captain whose decision is final and without appeal.

6.3 Class flags will be:

<i>Division</i>	<i>Flag</i>
1	1
2	2

6.4 **No Flying Sails.** Boats rated for spinnaker but wish to race no flying sails shall make this clear to the race committee at check-in.

6.4.1 Any boat declaring no flying sails will be scored in the division appropriate to its usual PHRF rating.

6.4.2 The no flying sails allowance is 12 seconds unless there is a valid PHRF certificate indicating that a different allowance is appropriate.

7 RACING AREAS

7.1 Races will be held in English Bay, generally west of the Kits barge buoy.

8 THE COURSES

8.1 The course will be determined by the race committee prior to the race. Typically the course will be set east-west in English Bay with the Kits Barge Buoy used as the easterly mark and either the Point Grey Bell Buoy, an orange tetrahedron, or an anchored freighter used as the westerly mark (depending on wind strength and conditions). Alternatively a course may be selected from Addendum A.

8.2 No later than just prior to the warning signal the race committee boat will announce the course to be sailed on VHF channel 68, and/or by hailing boat-to-boat, and/or by flying the code flag corresponding to the course shown in Addendum A.

9 MARKS

9.1 Marks may be the Kits Barge Buoy, QC, Bell Buoy, an orange tetrahedron, a freighter, or any other such mark the race committee deems appropriate.

9.2 In the event the race committee uses a substitute mark they will fly code flag L, come within hail, and describe any change in course and marks verbally, and on VHF channel 68.

9.3 All marks are to be left to port unless a green flag is flying on the committee boat, in which case all marks are to be left to starboard.

9.4 The starting and finishing marks will be an orange flag on the committee boat and an orange flag on a floating staff.

10 AREAS THAT ARE OBSTRUCTIONS

The following areas are designated as obstructions: A line extending from the northwest corner of the RCYC breakwater to the line beginning with the northwest corner of the RVYC Jericho breakwater, joining adjacent permanent red can buoys, and ending with the north end of the most westerly pier at Jericho Sailing Centre, shall be an obstruction. The Red marker buoys and the line both rank as obstructions. Boats sailing into the obstruction area shall be subject to protest and disqualification. DO NOT INDENT THE LINE.

11 THE START

11.1 Races will be started by using rule 26 with a warning signal made 5 minutes before the starting signal.

11.2 There will one start for all divisions unless the race committee deems it appropriate to start divisions separately.

11.3 The starting line will be between a staff displaying an orange flag on the starting mark and a staff displaying an orange flag on the committee boat.

11.5 A boat starting later than 30 minutes after her starting signal will be scored Did Not Start without a hearing. This changes rule A4.

11.6 Le Mans Start: the start sequence will be Le Mans style, as follows:

11.6.1 All Racers must be anchored with boat, its entire ground tackle and anchor to the leeward of the start line, or extension thereof, by 1055 hrs.

- 11.6.2 All headsails must be down on the deck (or fully furled if roller furling) and main sails must be down, stowed on the boom and tied with at least one sail tie (or fully furled if in-boom or in-mast furling).
- 11.6.3 Halyards may be attached.
- 11.6.4 There will be traditional 5, 4, and 1 minute warning signals.
- 11.6.5 By the 1-minute warning signal all crew and skippers must be below decks (or seated in the cockpit if no cabin exists) until the start signal. For safety and lookout, one crewmember may be positioned in the companionway, with their body fully inside the cabin and their head only above the level of the top of the companionway hatch. This configuration, with the boat anchored behind the line, sails down or furled, and crew below decks (or seated in the cockpit if no cabin exists) will be referred to as the "Le Mans pre-start position."
- 11.6.6 The race committee will provide a final 10-second count down to the start on VHF channel 68.
- 11.6.7 Following the start signal crews will be allowed to proceed with the race. **If a boat is physically OCS or has crewmembers on deck (or standing/outside the cockpit if no cabin exists) at any time between the 1-minute warning and the start signal, it will be required to fully return to a "Le Mans pre-start position" before it can start the race, AND it will be required to take a two-turns penalty after it has started. Failure to correctly reset may result in a protest against the offender.**
- 11.6.8 All anchors must be retrieved (no buoying the anchor and rode).
- 11.6.9 Windlass use is permitted.
- 11.6.10 If weather conditions render a Le Mans start unsafe or imprudent, the Race Committee may, at its discretion, change the start to a normal running start. Any such change will be announced on VHF channel 68 and/or by hailing.
- 11.6.11 While boats are anchored, standard "primacy" rules will apply in determining which boat is obliged to deal with situations where boats are drifting towards each other on anchor: If both boat's anchors are secure, the boat that anchored later is responsible for avoiding contact, and must adjust it's anchor line or anchor as necessary, even if it means taking a penalty following the start (see 11.6.7). If, however, a boat's anchor has pulled free and is dragging, the dragging boat is responsible for avoiding contact with non-dragging boats, even if the non-dragging boats anchored later.

12 THE FINISH

- 12.1 The finish line will be between a staff displaying an orange flag on the starting mark and a staff displaying an orange flag on the committee boat.
- 12.2 Kiss of the Frog: If it becomes obvious that one boat will place last, with no opportunity of improving her position, the race committee may give her a last place finish without requiring her to cross the finish line.
- 12.2.1 The race committee will sound three horns, raise the Kiss of the Frog flag, and attempt to hail the boat on VHF channel 68.
- 12.2.1 **In the event that Race Committee participates in the race, competitors will be required to record their finish times based on PST GPS time and report them when prudent (following the RC finish) to Race Committee.**

13 TIME LIMITS

- 13.1 Time limits for any division will be 2 hours from the start of the race for that division. If one or more boats in a division finish within the time limit, the time limit for that division will be extended 30 minutes.
- 13.2 Boats failing to finish within time limit will be scored Did Not Finish without a hearing.

14 PROTESTS AND REQUESTS FOR REDRESS

- 14.1** Protest forms are available at the [ISAF web site](#). Protests and requests for redress or reopening shall be delivered to the [Fleet Captain](#) within the time limit.
- 14.2** For each class, the protest time limit is 3 hours after the last boat has finished the last race of the day or the race committee signals no more racing today, whichever is later.
- 14.3** Notices of protests will be emailed to the involved parties and all parties will be informed of the time and place of the hearing when available.

15 SCORING

- 15.1** 1 race is required to be completed to constitute a regatta.

16 SAFETY REGULATIONS

- 16.1** Check-In: All boats must check in on VHF channel 68 or coming within hail of the race committee boat and giving boat name, sail number and division. A check in once anchored is required and will be used to determine anchoring primacy for the purposes of rule **11.6.11** and in the event of a protest.
- 16.2** A boat that retires from a race shall notify the race committee as soon as possible.

17 EQUIPMENT AND MEASUREMENT CHECKS

A boat or equipment may be inspected at any time for compliance with the class rules and sailing instructions. On the water, a boat can be instructed by a race committee equipment inspector or measurer to proceed immediately to a designated area for inspection.

18 OFFICIAL BOATS

Official boats will be marked by flying a large TCYC burgee.

19 RADIO COMMUNICATION

Except in an emergency, a boat shall neither make radio transmissions while racing nor receive radio communications not available to all boats. This restriction also applies to mobile telephones.

20 PRIZES

Unfortunately no prizes this year.

21 DISCLAIMER OF LIABILITY

Competitors participate in the regatta entirely at their own risk. See rule 4, Decision to Race. The organizing authority will not accept any liability for material damage or personal injury or death sustained in conjunction with or prior to, during, or after the regatta.

22 INSURANCE

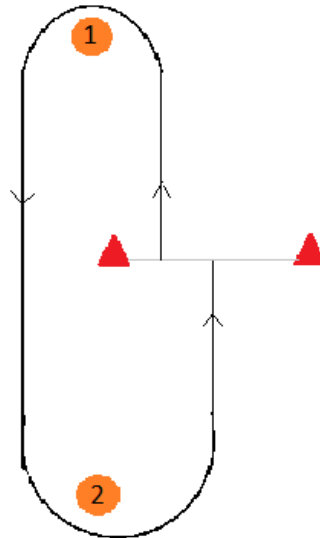
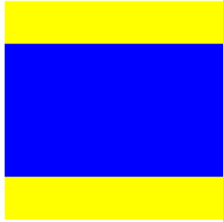
Each participating boat shall be insured with valid third-party liability insurance with a minimum cover of \$1,000,000 per incident or the equivalent.

23 POST RACE RAFT UP

Following completion of the race and weather conditions permitting, competitors are encouraged to raft up off of the Polar Bear Swim.

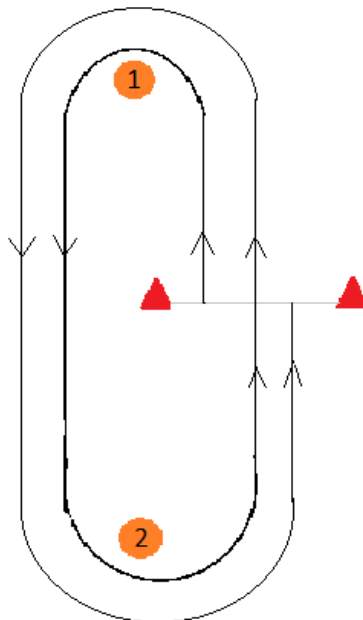
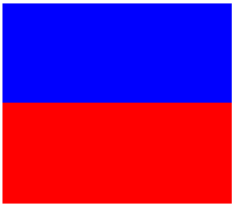
ADDENDUM A

Course Delta



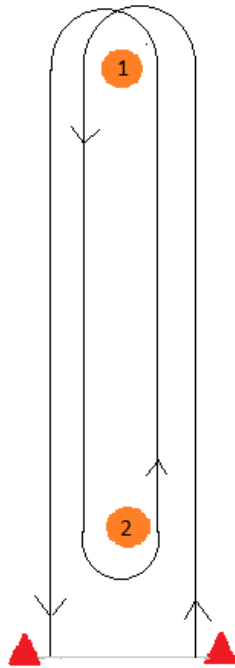
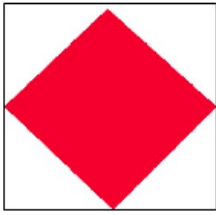
Start - 1 - 2 - Finish
Marks to port unless indicated
by green flag on committee
boat.
Do not cross start finish line
on downwind leg.

Course Echo



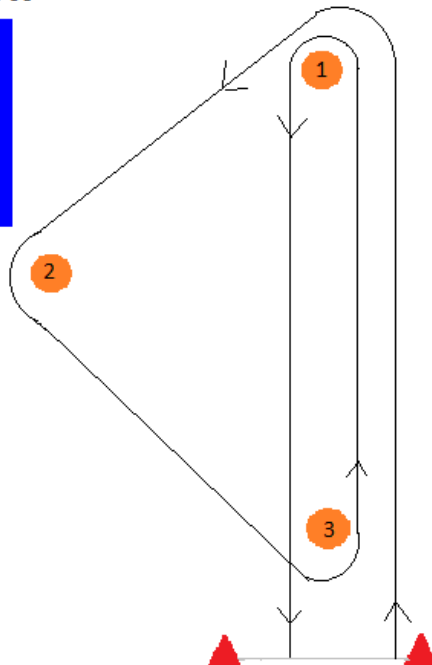
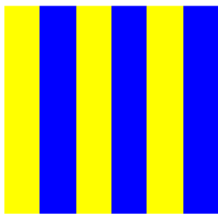
Start - 1 - 2 - 1 - 2 - Finish
Marks to port unless indicated
by green flag on committee
boat.
You must cross start finish line
on upwind legs only. Do not
cross on downwind legs.
Course may be shortened at
start finish line.

Course Foxtrot



Start - 1 - 2 - 1 - Finish
Marks to **port** unless indicated by **green**
flag on committee boat
Course may be shortened between
mark 2 and committee boat.

Course Golf



Start - 1 - 2 - 3 - 1 - Finish.
Marks to port unless indicated by green
flag on committee boat.
Course may be shortened between
mark 3 and committee boat.